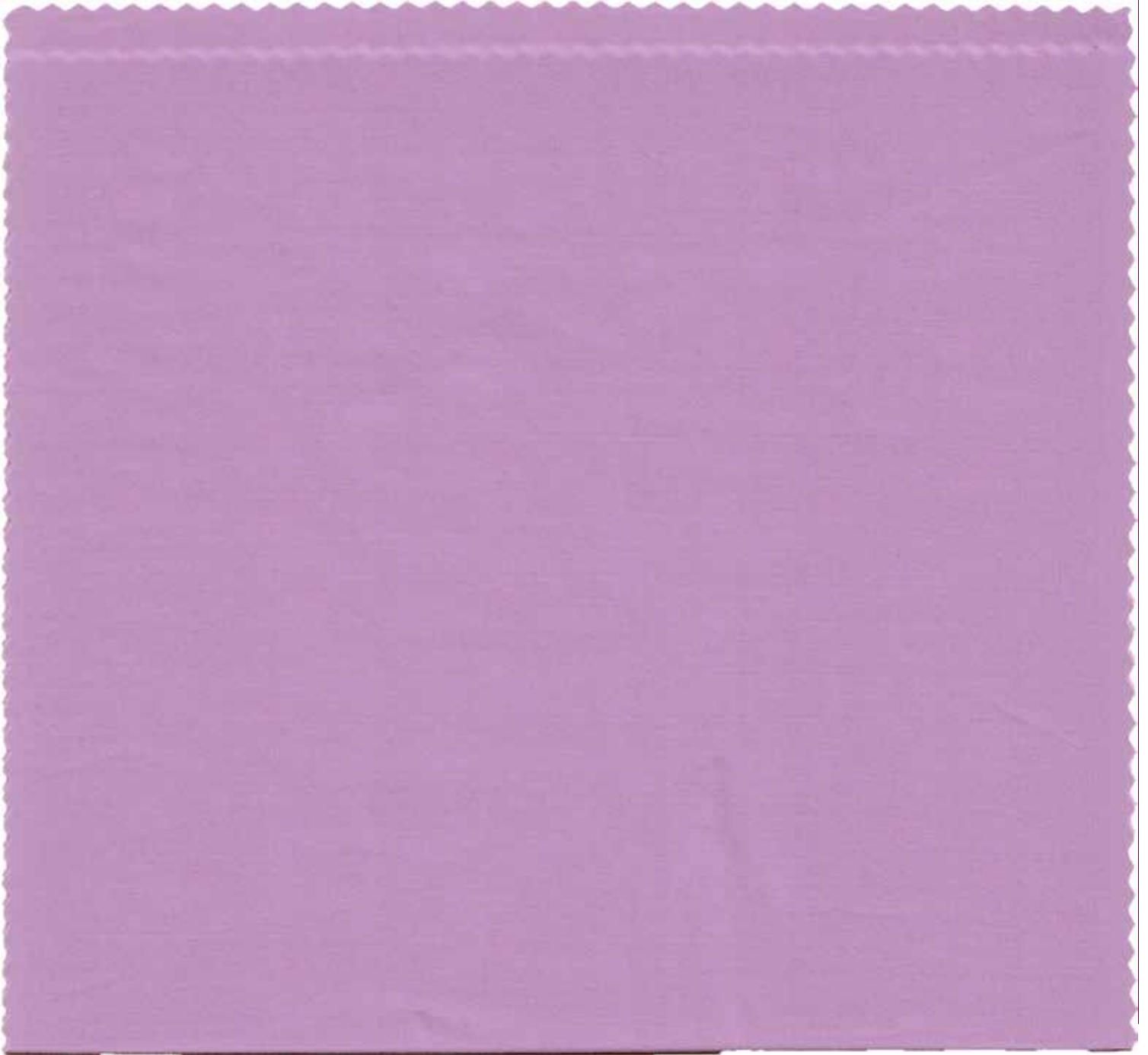


SJ20 - COMFORT

SJ20 - COMFORT

MICRO FIBER NYLON SPANDEX
82% NYLON / 18% SPANDEX
WEIGHT: 210 G/M², 6.2 OZ/YD²

WIDTH: 58/60"
CIRCULAR KNIT
GAUGE: 36



Ebi *Fabrics Corporation*
D.B.A. EBI INTERNATIONAL

2843 SOUTH HILL STREET
LOS ANGELES, CA 90007
TEL: (213) 765-0900 • FAX: (213) 765-0928
E-MAIL: EBI@EBIFABRICS.COM

Visit our website: www.ebifabrics.com



PINK SORBET
2001*



RIG PINK
663*



NEON PINK
614



FUCHSIA
13



MIXED PINK
641



ROSEBUD
677



PURPLE
20



EGGPLANT
666



BLUSH
776



CORAL
701*



RUST
39



HOT CORAL
701



RED
21



EBI BURGUNDY
766*



MARS
910



CAPPUCCINO
712



IVORY
29*

AURORA
759*

HALEI YELLOW
2030

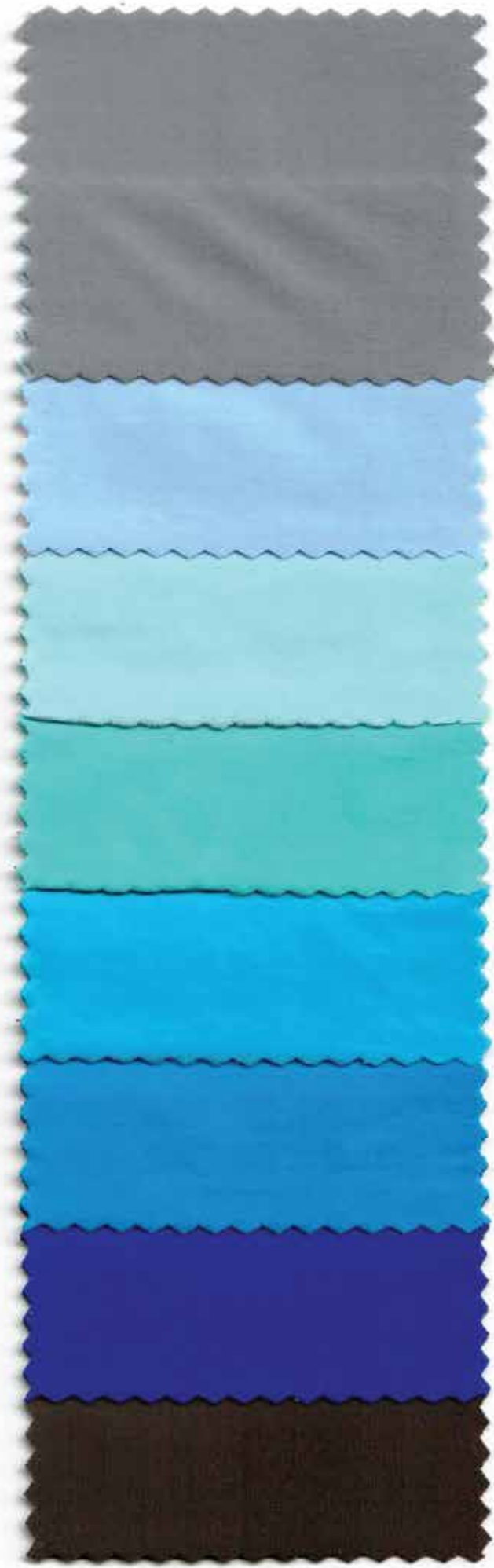
SUNSET BLVD
2149*

LIME
44

CATERPILLAR
791*

COOL GREEN
649*

NEW JADE
639



FOSSIL
2073

BOUQUET
549

BLUE STAR
654*

CABO BLUE
790*

CELESTE BLUE
642*

TURQUOISE
14

ROYAL
15

GRAPHITE
2086



PALE IRIS
551

CHAMPAGNE
2153*

URTH
550

SAGE
2085

FIJI
902

PEBBLE
2075

MARINE NAVY
665

SLATE GRAY
675*



WHITE
11

NAKED
760

NUDE
626

DOE
552

COPPER
87*

CHOCOLATE
BROWN
645*

BLACK
10

QUALITY CHARACTERISTICS



Stretch: Four way stretch.



High Performance: Extra comfort.

RECOMMENDED CARE INSTRUCTIONS



Washing: Machine wash cold, delicate cycle or hand wash. Minimal detergent.



Bleaching: Do not bleach.



Drying: Hang to dry.



Ironing: Do not iron.



Dry Cleaning: Articles are suitable for dry cleaning using organic solvents other than water.

MARKET



Swim



Dance



Yoga



Gymnastics



Golf



Tennis



Water Polo



Bowling



Performance



Leotard



Top



Sports Bra



Cheer



Ice Skating



Running



Fashion



Olympics



School



Hotel



Special Events



Athletic



Medical



Skiing



Band



Special Events

** Please note

-Bright shades are subject to lower grade colorfastness.

-We advise against pairing light and dark colors.