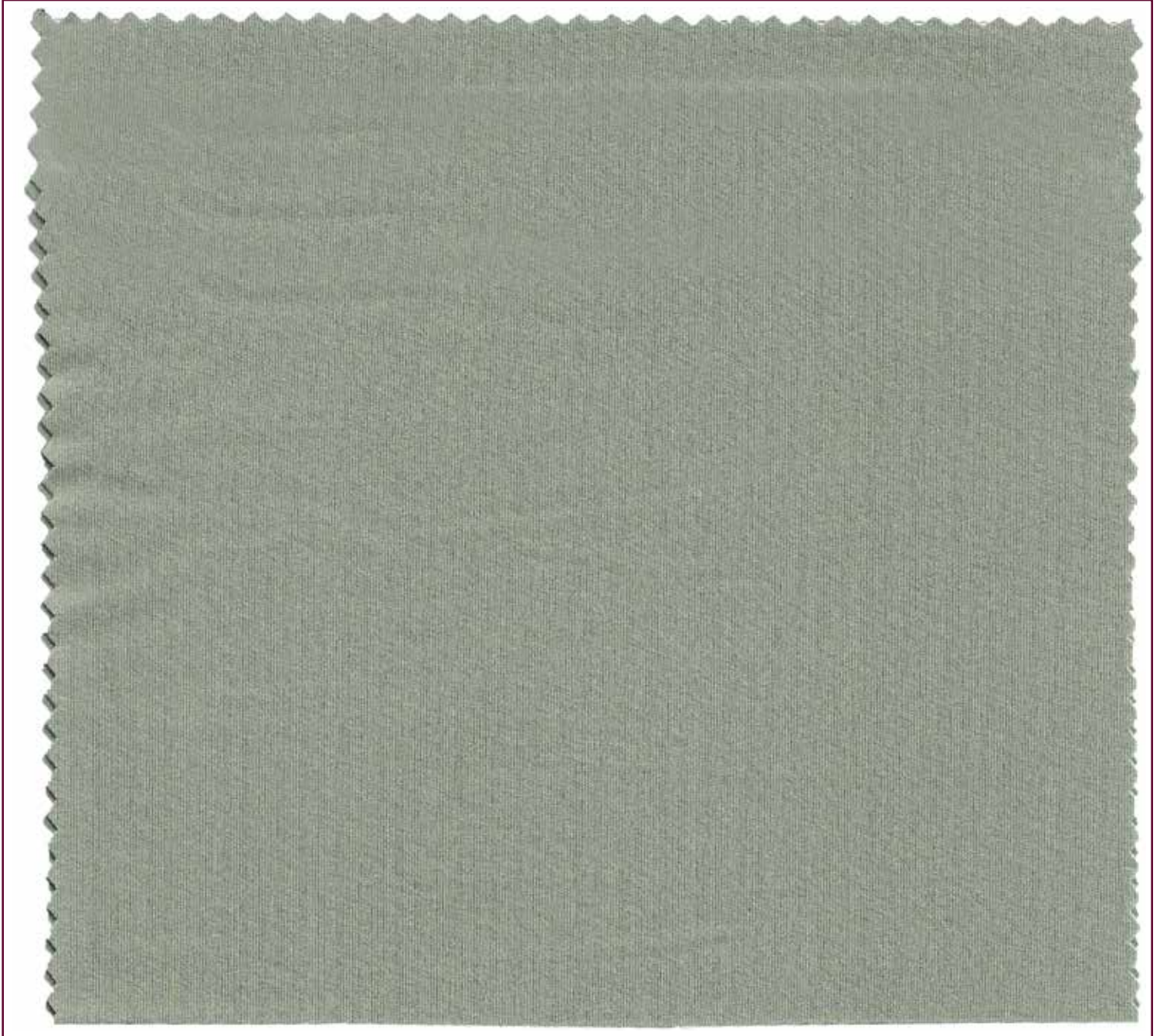


HK422W - BREEZE

HK422W - BREEZE

BRUSHED POLYESTER SPANDEX JERSEY W/ WICKING
88% POLYESTER / 12% SPANDEX
WEIGHT: 170 G/M², 5.01 OZ/YD²

WIDTH: 61/62"
CIRCULAR KNIT
GAUGE: 32



STONE 757

Ebi *Fabrics Corporation*
D.B.A. EBI INTERNATIONAL

2843 SOUTH HILL STREET
LOS ANGELES, CA 90007
TEL: (213) 765-0900 • FAX: (213) 765-0928
E-MAIL: EBI@EBIFABRICS.COM

Visit our website: www.ebifabrics.com



WHITE
11

PLUSH
2151

CHAMPAGNE
2153

ROSY PEACH
513

FAWN
532

TOAST
108

WARM PINECONE
535

RED
21



DUSTY OLIVE
479

PALE CACTI
545

JEAN
753

DEEP ROYAL
737

MARINE NAVY
665

SLATE GRAY
675

BLACK
10

QUALITY CHARACTERISTICS



Stretch: Four way stretch.



PFP: Prepared for printing.



Wicking: Absorbs liquid, allowing moisture to evaporate quickly.

RECOMMENDED CARE INSTRUCTIONS



Washing: Machine wash cold, delicate cycle or hand wash cold. Minimal detergent.



Bleaching: Do not bleach.



Drying: Hang to dry.



Ironing: Do not iron.



Dry Cleaning: Articles are suitable for dry cleaning using organic solvents other than water.

MARKET



Athletic



Dance



Yoga



Tennis



Running



Volleyball



Performance



Leotard



Top



Sports Bra



Cheer



Ice Skating



Olympics



Triathlon



Special Events



Fashion



School



Hotel



Band



Special Events

** Please note

-Bright shades are subject to lower grade colorfastness.

-We advise against pairing light and dark colors.