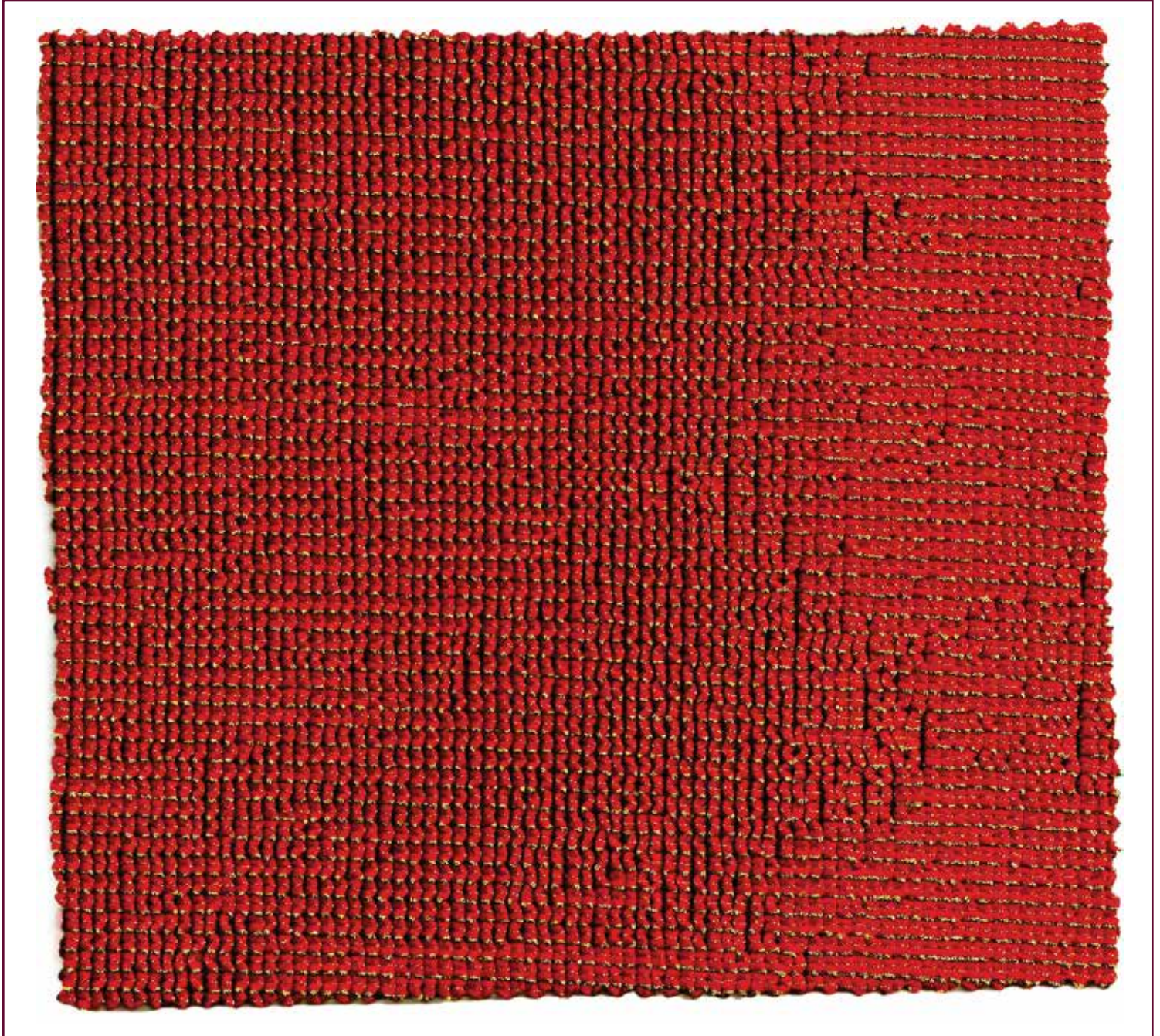


EL6015 - RITZY

EL6015 - RITZY

CRINKLE NYLON POLYESTER SPANDEX JACQUARD W/ METALLIC
53% NYLON / 40% POLYESTER / 2% METALLIC / 5% SPANDEX
WEIGHT: 680 G/M², 20.06 OZ/YD²

WIDTH: 23/24"
JACQUARD KNIT
GAUGE: 28



POPPY RED 758

2843 SOUTH HILL STREET
LOS ANGELES, CA 90007
TEL: (213) 765-0900 • FAX: (213) 765-0928
E-MAIL: EBI@EBIFABRICS.COM

Visit our website: www.ebifabrics.com



NEON PINK
614

OUTRAGEOUS ORANGE
2096

LEMONADE
2092

LIME
44

OCEAN
2051

WILD ORCHID
678



IVORY
29




MOCHA
620

COPPER
87






CHOCOLATE BROWN
645

OLIVE TWIST
662

QUALITY CHARACTERISTICS

	<u>Stretch</u> : Four way stretch.
	<u>Opaque</u> : Not able to let light through.
	<u>Texture</u> : Appearance or hand of the fabric.

RECOMMENDED CARE INSTRUCTIONS

	<u>Washing</u> : Machine wash cold, delicate cycle or hand wash. Minimal detergent.
	<u>Bleaching</u> : Do not bleach.
	<u>Drying</u> : Hang to dry.
	<u>Ironing</u> : Do not iron.
	<u>Dry Cleaning</u> : Articles are suitable for dry cleaning using organic solvents other than water.

MARKET

			
Swim	Dance	Performance	Top
			
Cheer	Special Events	Fashion	Hotel
			
Band			

** Please note

-Bright shades are subject to lower grade colorfastness.

-We advise against pairing light and dark colors.