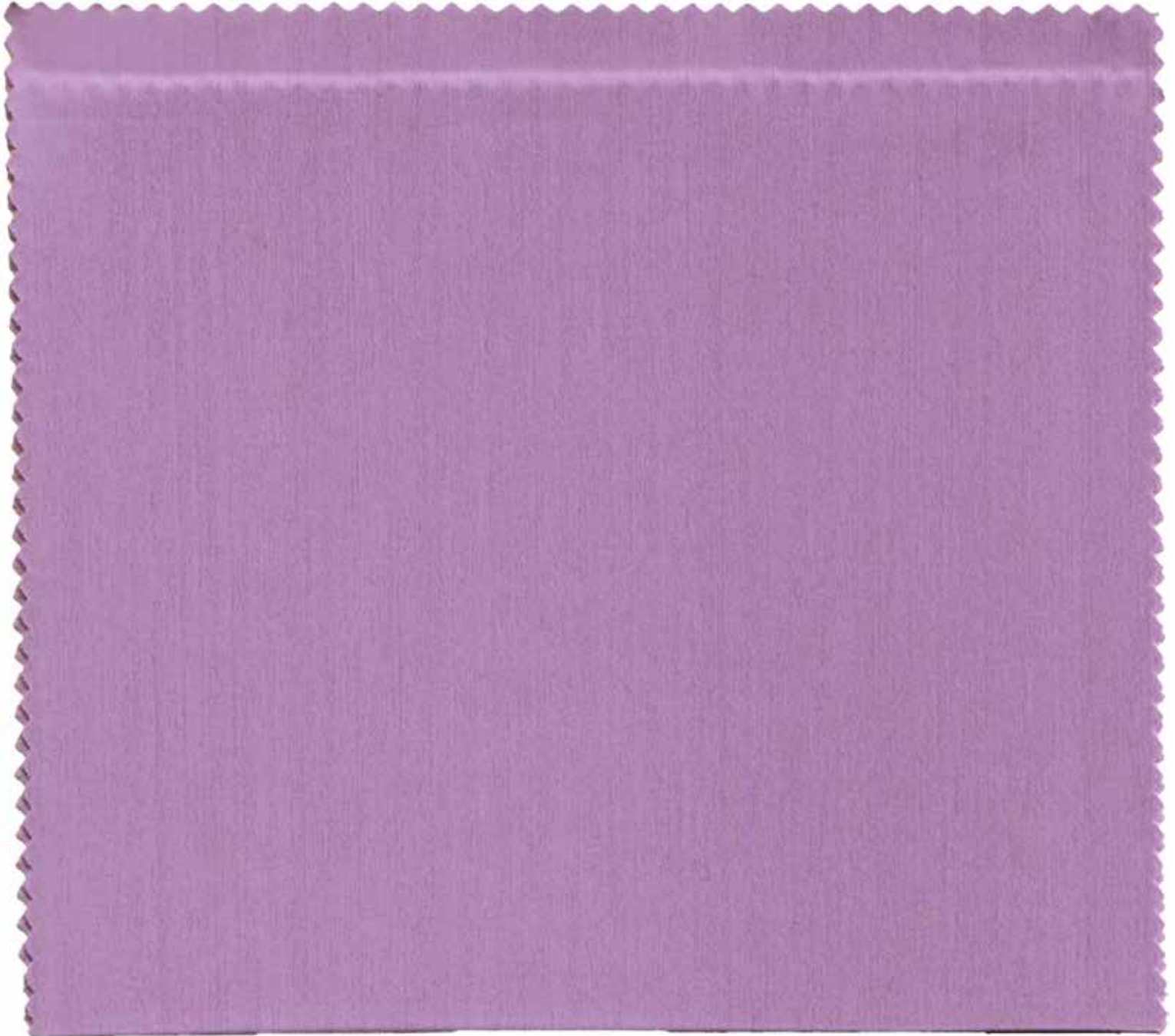


**AT246**

# AT246 - TAKEOFF

SOLID POLYESTER LYCRA TRICOT  
82% POLYESTER / 18% LYCRA  
WEIGHT: 250 G/M<sup>2</sup>, 7.4 OZ/YD<sup>2</sup>

WIDTH: 58/60"  
TRICOT KNIT  
GAUGE: 32



BRIGHT LILAC 2211

**Ebi** *Fabrics Corporation*  
D.B.A. EBI INTERNATIONAL

2843 SOUTH HILL STREET  
LOS ANGELES, CA 90007  
TEL: (213) 765-0900 • FAX: (213) 765-0928  
E-MAIL: [EBI@EBIFABRICS.COM](mailto:EBI@EBIFABRICS.COM)

Visit our website: [www.ebifabrics.com](http://www.ebifabrics.com)



WHITE / PFP  
11

SHABBY CHIC  
568

PINK COCKATOO  
565

DARK MAGENTA  
735

CANDY APPLE  
490

CLASSIC CAR RED  
561

BRICK  
34

PICANTE  
480

CLAY  
2295

WINE  
37

COCOA BROWN  
491



SOFT APRICOT  
2187

NUDE  
626

DREAMSICLE PIE  
562

SUNSET BLVD  
2149

HONEY  
54

MARGARITA  
2210

FRESH  
488

WHIMSICAL  
564

MACAW FEATHER  
566

MOON REFLECTION  
567

FESTIVAL  
487





SERENITY  
563

MIST  
485

PALE CACTI  
545

OLIVE  
41

SPRUCE  
482

TROPIC TEAL  
481

PERIWINKLE  
828

BLUE ME AWAY  
486

EMPATHY  
541

NAVY  
17

PURPLE  
20



STARDUST  
2221

CHAMPAGNE  
2153

PALE COPPER  
2196

FAWN  
532

HONEY BEIGE  
526

BASHFUL  
2156

TAUPE  
30

DUST  
2084

GRAY  
58

CHARCOAL  
35

BLACK  
10

## QUALITY CHARACTERISTICS



Stretch: Four way stretch.



PFP: Prepared for printing.



Opaque: Not able to let light through.

## RECOMMENDED CARE INSTRUCTIONS



Washing: Machine wash cold, delicate cycle or hand wash. Minimal detergent.



Bleaching: Do not bleach.



Drying: Hang to dry.



Ironing: Do not iron.



Dry Cleaning: Articles are suitable for dry cleaning using organic solvents other than water.

## MARKET



Athletic



Dance



Yoga



Gymnastics



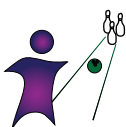
Hiking



Tennis



Running



Bowling



Volleyball



Performance



Leggings



Fashion



Cheer



Olympics



Hotel



Band



Top



Sailing



Ice Skating



Medical



Cycling



Wrestling



Football



Shorts



Special Events



Police



School



Special Events

\*\* Please note

-Bright shades are subject to lower grade colorfastness.

-We advise against pairing light and dark colors.